



THE OPEN LOGISTICS FOUNDATION'S **PLAYBOOK.**

BE
PART
OF IT



Everything about who we are,
how we work and how to join.

What most people want to know first.

What does the Open Logistics Foundation offer?

We offer a neutral platform for facilitating the collaborative development of open source solutions, to existing problems in logistics and supply chain management. We are focussing on non-market-differentiating services, so-called commodities.

What does the Open Logistics Foundation not offer?

We do not have any ready-to-use commercial products or services.

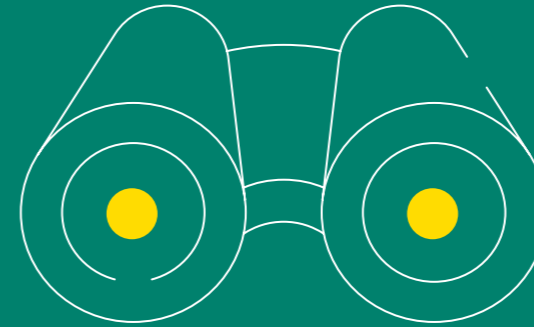
So, why should my company be part of the Open Logistics Foundation?

In the Open Logistics Foundation, you are part of a committed network in which you develop open source solutions together with other companies in Working Groups and Projects that benefit the entire industry - and, of course, your company, too.



Our **mission.**

We facilitate the collaborative implementation of open source software by moderating a highly engaged community based on fair and neutral processes.



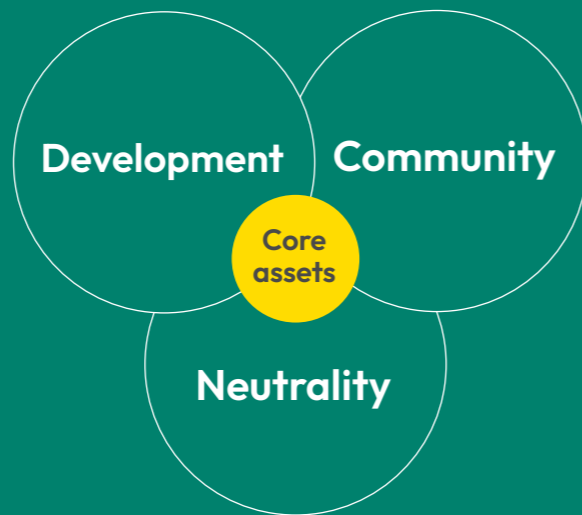
Our **vision.**

We are fostering jointly developed, free and publicly available open source solutions to enable efficient and sustainable supply chains.



Our core assets.

- **Development** of open source solutions and projects.
- Joint, active and diverse **community** working together to establish and maintain open source solutions.
- **Neutral place** where all parties can freely contribute and access open source software publications.





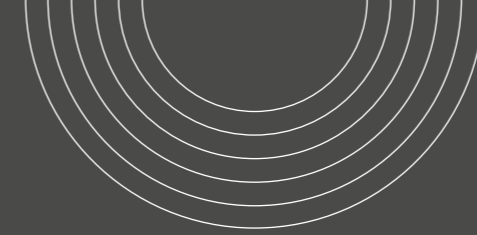
Our commitment.

1 2 3



Open source is the key.

Open source solutions can solve logistical pain points. Open source means that the software source code is free and publicly available. In the sense of “sharing is caring” open source development is a community-based approach to create any intellectual property via open collaboration, inclusiveness, transparency, and regular public updates. The digital transformation will not succeed without the use of open source.



Only commodities.

Commodities are the opposite of USPs (Unique Selling Proposition). The question is: What can't you earn money with? These are basic functionalities or processes that many companies need to offer but don't differentiate them from their competitors. From a compliance perspective, commodities are the things that competitors are allowed to jointly work on, by publishing it publicly and making it available as open source. The development of those commodities costs time and resources but they are not explicitly valued by the customers. They simply presuppose their existence – like having light in the fridge.

Main thing: the **community**.

The open ideation process combines multiple approaches and perspectives contributed by participants with different backgrounds. This means that the quality of the jointly developed ideas is very high and relevant. The process - from ideation to project finalisation - is transparent for everyone involved. This strengthens the discussions and ultimately leads to solutions that are best for the entire industry. Since the challenges are similar for all industry players, collaboratively developing de-facto standards for commodities is the most efficient way to solve them.

3



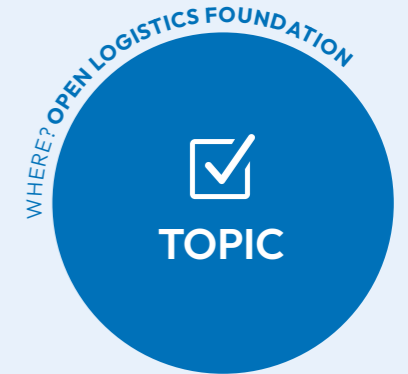
How we make things happen.

Developing ideas for open source solutions.

Current challenges companies are facing are the starting point of - in the end - open source developments under the umbrella of the Open Logistics Foundation. The Head Office supports the companies in concretising their topics as part of a **structured ideation process** based on the design thinking method. This includes market and technology research. In some cases, prototypes are also realised to test initial ideas.

At the end of this phase, a **decision is based on consensus and a defined evaluation matrix** as to whether the topic is suitable for processing within the Foundation or not. The criteria include, for example, the chances of realisation, the members' interest, or the industry-wide relevance.

If a topic is not realised, this is not a failure. After all, it is also important that the members recognise where cooperation is not worthwhile.



Information on
current activities
can be found in
the repository.



Finding common objectives for open source development.

As soon as it has been established that **an idea has the potential for a Working Group**, interested **member companies assess the feasibility** of the idea. Employees from various functions in the member companies contribute their expertise to do the assessment. This interest group works through a list of requirements, which focuses in particular on the logistical relevance of the topic.

The Foundation's **Logistical Steering Committee** and the **Head Office** support the questionnaire's preparation. For the Working Group to be established, at least one com-

pany in the interest group must be willing to take the lead.

The next step involves **focused work on the framework conditions**. If necessary, experts are consulted in order to reliably clarify certain issues and open questions, including legal or security ones. This is because the biggest challenges often lie not in the technical development but in the different organisational and legal structures of the companies involved. On this basis, projects on specific topics can then be set up where the actual development occurs.



Get an overview of the Working Groups on our website.

Going into the realisation of open source solutions.

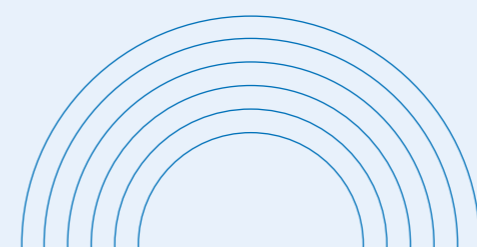
Now, **the work on the open source solutions on a code basis begins**, and the developers of the **member companies** are in demand. The Foundation's **Technical Steering Committee** defines the rules and criteria for the development and publication process, and the **Head Office** supports this process. The

code is published as open source in the Open Logistics Repository. Early practical testing enables continuous improvement of the solutions.

Anyone can view the current development status in the Foundation's repository at any time.



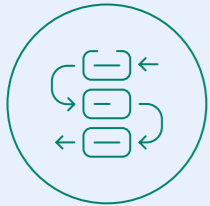
To find out about current coding, go to the repository.



WHERE? MARKET



INDIVIDUALISATION /
COMMERCIALISATION



Customising the components to **individual business processes.**

Whether a member of the Open Logistics Foundation or not, every company can now customise the components to its individual business processes and integrate them into its IT landscape. Commercial use is explicitly desired. As the work can be downloaded from the repository at any time, each company can decide when the time is right for customisation. Most companies wait until the solutions developed in phase 3 have

reached a certain level of maturity. Companies can do this themselves if they have the necessary developer resources or outsource it to IT service providers or R&D partners. The basis of the software must remain unchanged – this is the only way to create the intended de-facto standards and maximise the efficiency potential for everyone.



Glossary.

- ➔ **Member companies.** The companies that are members of the Support Association Open Logistics e. V. form our community.
- ➔ **Working Group.** In our Working Groups, interested member companies come together to work jointly on industry-wide pain points. The first aim is to establish a common understanding of a topic among companies. One or more projects can develop from a Working Group.
- ➔ **Project.** This is where the member companies actually work on source code on an open source basis.
- ➔ **Logistical Steering Committee.** The Logistical Steering Committee assesses the quality and logistical relevance of topics generated by the Foundation's Innovation Community.
- ➔ **Technical Steering Committee.** The Technical Steering Committee makes sure that the quality of the software developed in the projects is fitting to the Foundation's criteria.
- ➔ **Head Office.** The Head Office is the matchmaker, enabler and moderator. It collects and bundles ideas and supports the partnering companies in their membership. Communications and political affairs give the Foundation's vision the appropriate outreach.



Our community's heartbeat.



How we unlock the potential **of our network.**

The Open Logistics Foundation offers companies a safe space for open exchange of ideas, problems and solutions. Prioritising transparency, a shared vision, and an incremental approach cultivates trust – unlocking open collaboration's potential across supply chains.

Our mindset – **it's all about trust.**

We bring stakeholders together, and align on a common vision. We define shared goals, principles and a governance model.

We embrace radical transparency. We openly communicate challenges, successes, and learnings. We encourage open dialogue and feedback loops.

We begin with low-risk pilots delivering quick wins. As trust builds, we scale ambitious initiatives. We celebrate milestones and reinforce partnership benefits.



Our purpose – **more than the sum of its parts.**

We work on something greater, which can only be achieved together with a different mindset than in the past!

We focus on creating user-friendly and practice-oriented solutions, with the potential to actively shape the development of industry-relevant de-facto standards.



Get **involved.**

Jointly developing **open source solutions!**

Our international community brings together people and companies with the relevant expertise and background. The community is diverse and every contribution matters. There is an eye-to-eye interaction between SMEs and big players. Supported by the Head Office, the companies bring together experience from practice and research and transform it into practical open source applications.



Find out more
about the activities
of our community.



Who are we **addressing**?

The answer is: Every company dealing with logistics and supply chain management. The work of the Foundation benefits different companies in different fields such as

- equipment service providers,
- forwarding companies,
- IT companies,
- logistics service providers,
- platform operators,
- port/airport operators and
- shipping companies.

They can leverage open source services to become more resilient, to improve relationships with partners and customers, improve agility and cost efficiency and much more. Interested universities, research institutes, associations and individual people can also benefit from the Foundation activities.





How much does it cost to become a member?

Membership fees vary for companies to persons. This depends on your annual turnover, type of membership and the group you belong to. Whether you want to play a key role in shaping our agenda or focus

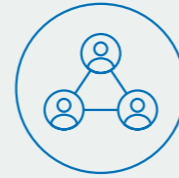


Find out more about the types of membership on our website.



Download the membership application form.

on projects that are of particular interest to your company: You can choose between two types of membership – the solution member and the strategic member.



Why do I have to join under the Support Association Open Logistics e. V.?

The Open Logistics Foundation was founded by duisport, Dachser, DB Schenker and Rhenus. Due to its legal framework, a Foundation is a “closed shop”. To integrate other players and to build up a vibrant community, the Support Association Open Logistics e. V. was founded. The Association supports the Foundation financially as well as by sending experts to the Working Groups, Projects and other activities

of the Foundation. Both the Open Logistics Foundation and its Support Association, Open Logistics e. V., are independent and neutral organisations.



Take a look at our website, at how we are organised, and who is responsible for which tasks.



What can the source code licensed by the Foundation be used for?

The Open Logistics Foundation License (OLFL) is a permissive licence, which places only minimal restrictions on the software. Instead, the Open Logistics Foundation favours a widespread adoption of the software. Companies can use the software moduls from the Open Logistics Repository in hardware and

software environments as well as in databases, data networks and online services. They can modify, interpret, edit or redesign it. Also, they can use the source code both for their internal purposes and to provide services to third parties.



What are the specific possibilities for commercial use?

Any open source software licenced under the Open Logistics Foundation License can be combined with other products and distributed or sold as a package to third parties. These can also be distributed under other licence conditions. The only requirement is to indicate which software in the product is covered by the Open Logistics Foundations License.

Companies do not have to report the use or contribute back modifications to the Open Logistics Repository.



You can find the text of the OLFL [here](#).



Can I participate even **without becoming a member?**

Even if you are not a member you have access to our Open Logistics Repository. Here, the open source software is developed and published. You can give feedback, stay updated and download the source code for free.



If you need reasons why you should join us, take a look here.



If you want to support the Foundation without becoming a member, you can endow or donate.



Services.



Look behind the scenes and get inspired.

Our Open Logistics Magazine provides interviews, viewpoints and background reports with classifications and analyses of current aspects of open source in logistics and supply chain management. The magazine is published two times a year and is available to read and download on our website.

With our “Get inspired” newsletter, we will keep you posted about the latest developments in connection with the Open Logistics Foundation and the Community. It is published once a month, contains articles on current projects and gives an overview of upcoming events.



Sign up for the
new edition.



Subscribe to the
newsletter.

Contact.



Get in touch:
We are here to help.



Andreas Nettsträter
CEO



Scan for
business card.



Carina Tüllmann
COO



Scan for
business card.



open logistics
foundation

Open Logistics Foundation
Emil-Figge-Str. 80
44227 Dortmund
Germany
www.openlogisticsfoundation.org
info@openlogisticsfoundation.org