




Working Group Track & Trace

Introduction

In today's intricate web of supply chains, tracking and tracing of shipments is essential. Technologies such as barcodes, blockchain, RFID and RTLS have revolutionised logistics, allowing stakeholders to monitor shipments in real time. Track & Trace optimises logistics, improves service quality and promotes transparency. However, the lack of standardised systems across companies has historically led to inefficiencies and complexity in logistics.

Why is this relevant?

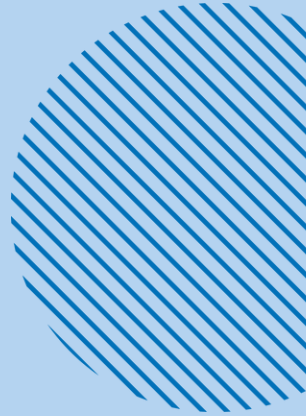


This issue is significant because of the challenges posed by non-standardised systems and terminology. Without uniformity, communication breakdowns and inefficiencies plague logistics operations. The establishment of the Track & Trace Working Group aims to address these issues by developing de-facto standardisation. Such efforts will increase transparency, streamline communication and improve the efficiency of supply chain processes.

Challenge: Drive industry-wide adoption and implementation of standardised track and trace events and notifications to ensure a unified and seamless integration across multiple stakeholders.

Central question: What events and notifications can we all agree on, and under what title/code?

Project Tracking Event Model



- **Started:** March 2024
- **Problem:** There are currently many different IT systems, standards and platforms that deal with the track and trace of shipments and goods. These generally have their own definition of data models, events and notifications. The exchange of information, e.g. about specific events, along the supply chain and between all parties involved is therefore limited or only possible with a certain amount of effort.
- **Goal:** Firstly, the creation of a minimum common event and notification model, including status codes, between LSPs and customers, i.e. what events and notifications occur during an end-to-end transport. Second, a standardised event and notification model, including status codes, between LSPs and carriers (subcontractors) for individual shipments.
- **Status:** Definition of the track and trace process and aligning with the participants on a standard usecase for B2B road transport.



Working Group Track & Trace

WG Members



Working Group Leads

Marius Hilb
DB Schenker
marius.hilb@dbshenker.com

Nathalie Böhning
Open Logistics Foundation
nathalie.boehning@openlogistics
foundation.org

Get intouch with our T&T Working Group



Scan the QR code for more information
about, meeting times, and more.

Join our GitLab to stay up to date, download and view our
T&T open source solutions:
<https://git.openlogisticsfoundation.org/>

Our Ideation Topics at a glance



Driver app

Implementation of a white-label driver application focused on the spot market, running in parallel with the company's own applications.



Train & Wagon

Developing uniform interfaces and processes for recording and transmission of train and wagon information.

Explore all the projects available in the Open Logistics Repository:
<https://openlogisticsfoundation.org/foundation-projects/all-projects/>